

product overview



product description

The expandable folding house is a movable building that can be quickly constructed and easily disassembled, which is suitable for a variety of application scenarios, such as house expansion, temporary living, tourism and vacation, disaster relief and so on. It is made of all-galvanized frame and environmentally friendly composite material, with portable, strong, environmentally friendly, recyclable and other characteristics. The appearance of the expandable folding house provides flexible living space for people in a short time.

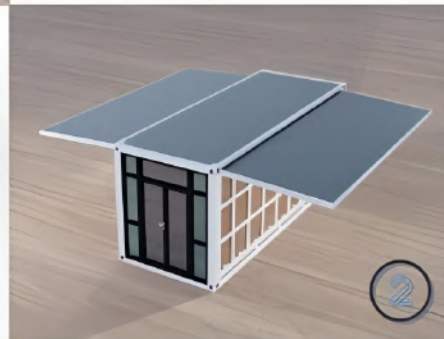
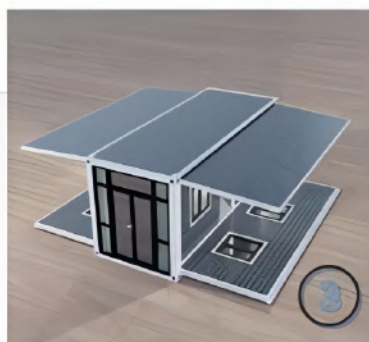
principle of the product

The expandable folding house uses high-strength galvanized frame as the support structure to ensure the stability and safety of the overall structure. The exterior is covered with environmentally friendly composite panels, which are both portable and have good insulation thermal, thermal and sound insulation properties. Easy space expansion and recycling with fast expansion and folding.

product feature

1. **Rapid expansion and folding:** The expandable folding house adopts prefabricated components, which can be completed by simple assembly and fixing, without large-scale equipment and professional construction personnel, making the construction process more efficient and convenient.
2. **Lightweight and durable:** The high-strength galvanized frame and environmentally friendly composite materials make the two-wing extension house extremely lightweight and durable, easy to transport and install.
3. **Flexible space:** the expandable folding house can be customized according to user needs, providing a variety of sizes and apartment types to meet the space needs of different scenes.
4. **Good living experience:** The expandable folding house has good thermal insulation, thermal insulation and sound insulation performance, and is equipped with integrated circuits, lighting, furniture and other facilities to provide users with comfortable living experience.
5. **Environmental protection and sustainable:** The expandable folding house is made of environmentally friendly materials and can be recycled, which is conducive to protecting the environment and saving resources.
6. **Multi-scenario application:** The expandable folding house is suitable for housing expansion, temporary living, tourism and holiday, disaster relief and other scenarios, providing users with a wide range of application choices.

Expand Display



Product Advantage

01

Comparison of steel structure:

Prefabricated steel structure building in the field of civil, industrial and agricultural construction has been widely used, the traditional steel structure house is composed of steel beams, supporting steel beams and steel columns and other structures, in order to facilitate the transportation of the prefabricated steel structure house, it is usually disassembled into a large number of structural components, splice assembly process is complicated, resulting in the splice assembly of the prefabricated steel structure house inconvenience. The expandable folding house products can be prefabricated and finished, saving on-site installation for customers.

02

Compared with the traditional mobile board room:

from the raw material selection, the frame of the expandable folding house product has thick material, large cross-section, strong stability and better safety, the sandwich density of the composite board is higher, the process is more refined, the service life is longer, up to 20-25 years, and the later use is more guaranteed. The traditional movable board room needs to be spliced on the spot, and the expandable folding house can be prefabricated and decorated in the factory, and the landing can be checked in.

03

Strong structure:

earthquake resistant, Typhoon, the size of the structural parts is customized according to the sea container packing, which greatly exceeds the size of the components of ordinary steel structure houses. Through high-strength connection, the overall structure of high strength is formed, which can withstand magnitude 8 earthquakes and category 12 typhoons. It can also be an emergency rescue temporary house that can be expanded and folded.

04

Packing and transportation:

After the house is prefabricated, it is folded and stored for easy packing. Combined with the size of the container design and production, can be directly used for sea and land transportation, strong and convenient, greatly saving space in the process of transportation and storage, thereby reducing transportation and storage costs.

customization

05

Customization diversity:

According to different scenarios, different needs, design layout for optional installation.

Wall panel can be according to customer needs from the appearance of color, insulation performance and fire rating has multiple choices, conventional can use: rock wool board, EPS board, polyurethane board, glass wool board, Great Wall board, graphite polystyrene bamboo fiber integrated board.....

06

Indoor floor can be SPC stone plastic floor, patterned aluminum plate, etc., can also be empty bottom site pouring cement floor laying tile:

The entrance door can choose steel door, aluminum alloy door, broken bridge aluminum door, KFC door, security door, etc.

Windows available plastic steel window, aluminum alloy window, broken bridge aluminum window;

Electrical distribution standards:

According to different countries to replace the circuit system that meets the certification.

07

Easy to use:

mobile, scalable, high reuse rate, factory pre-assembly, doors, Windows and circuits are prefabricated in the factory, the site installation link only needs to be placed in the designated place, spread and fixed, install the indoor top corner, the footline, access to the water source power, put in furniture appliances, you can carry the package to stay in the fine decoration house, reduce the on-site workload to a minimum.

Appearance/size

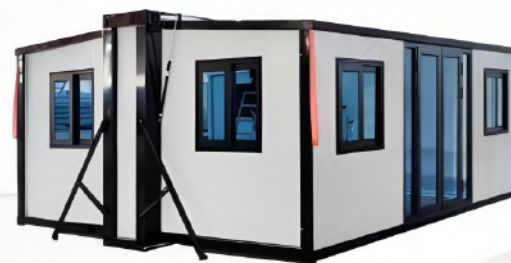
expandable folding house



10ft expandable folding house	
Extended size	L2950*W6300*H2480mm
Inside size	L2510*W6140*H2240mm
Folding size	L2950*W2200*H2480mm
cover area	18. 5m²
Loading quantity: one 40HQ container fit 4 pieces	

Appearance/size

expandable folding house



20ft 700mm expandable folding house

Extended size	L5900*W4800*H2480mm
Inside size	L5460*W4640*H2240mm
Folding size	L5900*W700*H2480mm
cover area	27.5m ²
Loading quantity: one 40HQ container fit 6 pieces	



Appearance/size

expandable folding house



20ft expandable folding house

Extended size	L5900*W6300*H2480mm
Inside size	L5460*W6140*H2240mm
Folding size	L5900*W2200*H2480mm
cover area	37m²
Loading quantity: one 40HQ container fit 2 pieces	



Appearance/size

expandable folding house



20ft heighten expandable
folding house



20ft Arbor wood grain style
expandable folding house



Appearance/size

expandable folding house



30ft expandable folding house

Extended size	L9000*W6220*H2480mm
Inside size	L8540*W6060*H2240mm
Folding size	L9000*W2200*H2480mm
cover area	56m²
Loading quantity: one 40HQ container fit 1 piece	



30ft
sunshade
style

Appearance/size

expandable folding house



40ft expandable folding house	
Extended size	L11800*W6220*H2480mm
Inside size	L11540*W6060*H2240mm
Folding size	L11800*W2200*H2480mm
cover area	73m ²
Loading quantity: one 40HQ container fit 1 piece	



Appearance/size

flat top expandable folding house



20ft flat top expandable folding house

Extended size	L5900*W6420*H2450mm
Inside size	L5740*W6260*H2250mm
Folding size	L5900*W2250*H2450mm
cover area	38m²
Loading quantity: one 40HQ container fit 2 pieces	

Appearance/size

flat top expandable folding house



30ft flat top expandable folding house

Extended size	L9000*W6420*H2450mm
Inside size	L8550*W6260*H2210mm
Folding size	L9000*W2250*H2450mm
cover area	58m ²

Loading quantity: one 40HQ container fit
1 piece



40ft flat top expandable folding house

Extended size	L11800*W6420*H2450mm
Extended size	L11650*W6260*H2210mm
Folding size	L11800*W2250*H2450mm
cover area	76m ²

Loading quantity: one 40HQ container fit
1 piece

Appearance/size

Wind and solar expandable folding house



Wind and solar expandable folding house

The new energy power generation system that uses wind and solar energy resources to complement each other combined with the technology of battery as an energy storage device provides household appliances in the room to use during the day and store excess energy and supply it for use at night. For example, wind power can be used in rainy weather, breeze and light source can generate electricity without external power (with external power port), and intelligent switching of energy-saving mode.

Wind and solar expandable folding house	
Extended size	L5900*W6300*H2480
Inside size	L5460*W6140*H2240
folding size	L5900*W2200*H2480
cover area	37m²

Supporting facilities

Wind and solar expandable folding house



Solar controller and
inverter integrated
machine



Accumulator box



Distribution box



Wind power controller

◆ **Configuration facility:** Wind turbine (300W vertical axis), solar photovoltaic panels (330W*18, total capacity 5094W), energy storage box (5000W lithium iron phosphate battery rechargeable), 5000W solar controller and inverter integrated machine.

◆ **Adapt to scene:** Remote pastoral areas, areas without power supply, islands, scenic spots, etc.

flat top expandable folding house production order example



expandable folding house production order example



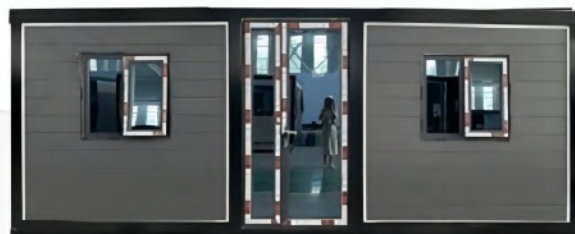
expandable folding house production order example

双翼拓展房生产订单示例



expandable folding house production order example

双翼拓展房生产订单示例



expandable folding house production order example

双翼拓展房生产订单示例



expandable folding house production order example

双翼拓展房生产订单示例



3D Three-dimensional rendering



配置介绍

Configuration
Introduction

10-Foot Expandable Folding House configuration Sheet

Expanded size	L2950*W6300*H2480mm	layout	One room
internal dimensions	L2510*W6140*H2240mm	Number of occupants	2 to 4 persons
Folded dimensions	L2950*W2200*H2480mm	Power consumption	12KW
Footprint	18.5㎡	total net weight	2.6 tons
framework structure			
Serial number	Name	Content	Specifications
1	Main frame (full galvanized national standard)	Top side beams	80*100*2.5mm galvanized square tubes
2		Top beam	Bent parts galvanized 2.5 mm
3		top transverse secondary beams	30*50*1.5mm galvanized square tube
4		Bottom side beams	80*100*2.5mm galvanized square tubes
5		Bottom end beams	Galvanized bending parts 2.5 mm thick
6		bottom longitudinal secondary beams	Mouth 40*80*1.5mm galvanized square tube
7		bottom transverse secondary beams	40*80*1.5mm galvanized square tube
8		6mm zinc plated hanging head	Galvanized hanging head L210*W150*H160mm
9		steel columns	Galvanized bending parts 2.5 mm thick
10	Side frames (fully galvanized GB)	Top frame	40*80*1.5mm p-tube
11			40*80*1.5mm galvanized square tubes
12		Bottom frame	60*80*2.0mm galvanized square tubes

13	Side frames (fully galvanized)	Folding hinge	130mm galvanized hinge
14	overall frame protection	Sprayed with baked enamel	electrostatic spraying/straight white plastic powder baking process + anticorrosive coating
15	Box top	main exterior top plate	Type 950-50mm thick double-sided 0.3mm, EPS color steel composite board + corrugated veneer 10.45mm
16		main interior ceiling panels	Type 950 - 50mm thick double-sided 0.3mm, EPS color steel composite panel
17		External top plates of both wings	Type 950-65mm thick double-sided 0.3mm, EPS color steel composite board + corrugated veneer 10.45mm
18	panels for walls	side walls, front and rear walls	Type 950-65mm thick double-sided 0.3mm, EPS color steel composite panel
19		interior partition wall panels	Type 950 - 50mm thick double-sided 0.3mm, EPS color steel composite panel
20	Ground	The main frame	Bamboo glue board 18mm thick
21		Both flanks	Bamboo glue board 18mm thick
22	Windows and doors	Plastic double-glazed sliding windows	920*920mm*4 pieces
23		High-quality steel fire doors	840*2035mm*1 piece
24	electrical systems	circuit systems	Voltage 220V,50HZ
25		Lighting	300*300 flat panel light, large ceiling light
26		Sockets	Standard with international three-hole, five-hole socket (can be configured according to customer requirements socket standard)
27		Light switches	Double open, single key switch (switch standard can be configured according to customer requirements)
28		Wiring	Incoming wires 6', air conditioning outlets 4', general outlets 2.5', lighting 1.5', (Standard national standard wires, customized circuits to meet
29	Accessories	Containing top corner, skirting, corner wrapping, waterproof tape, sling, structural adhesive (Baiyun), glue gun, etc., the	

配置介绍

Configuration
Introduction

specification of 700mm expandable folding house

Expanded size	L5900*W4800*H2480mm	layout	One room
internal dimensions	L5460*W4640*H2240mm	Number of occupants	2 to 4 persons
Folded dimensions	L5900*W700*H2480mm	Power consumption	12KW
Footprint	27.5㎡	total net weight	2.3 tons
framework structure			
Serial number	Name	Content	Specifications
1	Main frame (full galvanized national standard)	Top side beams	80°100°2.5mm galvanized square tubes
2		Top beam	Bent parts galvanized 2.5 mm
3		top transverse secondary beams	30°50°1.5mm galvanized square tube
4		Bottom side beams	80°100°2.5mm galvanized square tubes .
5		Bottom end beams	Galvanized bending parts 2.5 mm thick
6		bottom longitudinal	40°80°1.5mm galvanized square tube
7		bottom transverse secondary beams	40°80°1.5mm galvanized square tube
8		6mm zinc plated hanging head	Galvanized hanging head L210°W150°H160mm
9		steel columns	Galvanized bending parts 2.5 mm thick
10	Side frames (fully galvanized GB)	Top frame	40°80°1.5mm p-tube
11			40°80°1.5mm galvanized square tubes
12		Bottom frame	60°80°2.0mm galvanized square tubes

13	Side frames (fully galvanized)	Folding hinge	130mm galvanized hinge
14	overall frame protection coating	Sprayed with baked enamel	electrostatic spraying/straight white plastic powder baking process + anticorrosive coating
15	Box top	main exterior top plate	Type 950-50mm thick double-sided 0.3mm, EPS color steel composite board + corrugated veneer t0.45mm
16		main interior ceiling panels	Type 950 - 50mm thick double-sided 0.3mm, EPS color steel composite panel
17		External top plates of both wings	Type 950-65mm thick double-sided 0.3mm, EPS color steel composite board + corrugated veneer t0.45mm
18	panels for walls	side walls, front and rear walls	Type 950-65mm thick double-sided 0.3mm, EPS color steel composite board
19		interior partition wall panels	Type 950 - 50mm thick double-sided 0.3mm, EPS color steel composite panel
20	Ground	The main frame	Bamboo glue board 18mm thick
21		Both flanks	Bamboo glue board 18mm thick
22	Windows and doors	Plastic double-glazed sliding windows	920°920mm*4 pieces
23		High-quality steel fire doors	840°2035mm*1 piece
24	electrical systems	circuit systems	Voltage 220V,50HZ
25		Lighting	300°300 flat panel light, large ceiling light
26		Socket	Standard with international three-hole, five-hole socket (can be configured according to customer requirements socket standard)
27		Light switches	Double open, single key switch (switch standard can be configured according to customer requirements)
28		Wiring	Incoming wires 6', air conditioning outlets 4', general outlets 2.5', lighting 1.5'. (Standard national standard wires, customized circuits to
29	Accessories	Containing top corner, skirting, corner wrapping, waterproof tape, sling, structural adhesive (Baiyun), glue gun, etc., the	

配置介绍

Configuration
Introduction

specification of 20ft expandable folding house

Expanded size	1.5900*W6300*H2480mm	layout	One room
internal dimensions	1.5460*W6140*H2240mm	Number of occupants	2 to 4 persons
Folded dimensions	1.5900*W2200*H2480mm	Power consumption	12KW
Footprint	37m²	total net weight	3.7 tons
framework structure			
Serial number	Name	Content	Specifications
1	Main frame (full galvanized national standard)	Top side beams	80*100*2.5mm galvanized square tubes
2		Top beam	Bent parts galvanized 2.5 mm
3		top transverse secondary beams	30*50*1.5mm galvanized square tube
4		Bottom side beams	Mouth 80*100*2.5mm galvanized square tubes
5		Bottom end beams	Galvanized bending parts 2.5 mm thick
6		bottom longitudinal secondary beams	40*80*1.5mm galvanized square tube
7		bottom transverse secondary beams	40*80*1.5mm galvanized square tube
8		6mm zinc plated hanging head	Galvanized hanging head 1.210*W150*H160mm
9		steel columns	Galvanized bending parts 2.5 mm thick
10	Side frames (fully galvanized GB)	Top frame	40*80*1.5mm p-tube
11			40*80*1.5mm galvanized square tubes
12		Bottom frame	60*80*2.0mm galvanized square tubes

13	Side frames (fully galvanized)	Folding hinge	130mm galvanized hinge
14	overall frame protection coating	Sprayed with baked enamel	electrostatic spraying/straight white plastic powder baking process + anticorrosive coating
15	Box top	main exterior top plate	Type 950-50mm thick double-sided 0.3mm, EPS color steel composite board + corrugated veneer (0.45mm)
16		main interior ceiling panels	Type 950 - 50mm thick double-sided 0.3mm, EPS color steel composite panel
17		External top plates of both	Type 950-65mm thick double-sided 0.3mm, EPS color steel composite board + corrugated veneer (0.45mm)
18	panels for walls	side walls, front and rear walls	Type 950-65mm thick double-sided 0.3mm, EPS color steel composite panel
19		interior partition wall panels	Type 950 - 50mm thick double-sided 0.3mm, EPS color steel composite panel
20	Ground	The main frame	Bamboo glue board 18mm thick
21		Both flanks	Bamboo glue board 18mm thick
22	Windows and doors	Plastic double-glazed sliding	920*920mm*4 pieces
23		High-quality steel fire doors	840*2035mm*1 piece
24	electrical systems	circuit systems	Voltage 220V, 50HZ
25		Lighting	300*300 flat panel light, large ceiling light
26		Socket	Standard with international three-hole, five-hole socket (can be configured according to customer requirements socket standard)
27		Light switches	Double open, single key switch (switch standard can be configured according to customer requirements)
28		Wiring	Incoming wires 6', air conditioning outlets 4', general outlets 2.5', lighting 1.5'. (Standard national standard wires, customized circuits to meet certification)
29	Accessories	Containing top corner, skirting, corner wrapping, waterproof tape, sling, structural adhesive (Baiyun), glue gun, etc., the	

配置介绍

Configuration
Introduction

specification of 30ft expandable folding house

Expanded size	1.9000*W6220*H2480mm	layout	One room
internal dimensions	1.8540*W6060*H2200mm	Number of occupants	3 to 6 persons
Folded dimensions	1.9000*W2200*H2480mm	Power consumption	12KW
Footprint	56 m²	total net weight	6 tons
framework structure			
Serial number	Name	Content	Specifications
1	Main frame (fully galvanized GB)	Top side beams	80*140*3.75mm galvanized square tube , galvanized square tube
2		Top beam	Bent parts galvanized 3.0 mm
3		top transverse secondary beams	30*50*1.8mm galvanized square tube
4		Bottom side beams	80*140*3.0mm galvanized square tube , galvanized square tube
5		Bottom end beams	Bent parts galvanized 3.0 mm
6		bottom longitudinal secondary beams	80*80*2.0mm galvanized square tube
7		bottom transverse secondary beams	40*80*2.0mm galvanized square tube
8		6mm zinc plated hanging head	Galvanized hanging head 1.210*W150*H160mm
9		steel columns	Bent parts galvanized 3.0 mm
10	Side frames (fully galvanized GB)	Top frame	40*80*1.8mm P-tube, galvanized
11			Mouth 40*80*1.8mm galvanized square tube
12		Bottom frame	Mouth 60*80*2.5mm galvanized square tube

13	Side frames (fully galvanized)	Folding hinge	130mm galvanized hinge
14	overall frame protection coatings	Sprayed with baked enamel	electrostatic spraying/straight white plastic powder baking process + anticorrosive coating
15	Box top	main exterior top plate	Type 950-50mm thick double-sided 0.3mm, EPS color steel composite board + corrugated veneer t0.45mm
16		main interior ceiling panels	Type 950 - 50mm thick double-sided 0.3mm, EPS color steel composite panel
17		External top plates of both wings	Type 950-65mm thick double-sided 0.3mm, EPS color steel composite board + corrugated veneer t0.45mm
18	panels for walls	side walls, front and rear walls	Type 950-65mm thick double-sided 0.3mm, EPS color steel composite panel
19		interior partition wall panels	Type 950 - 50mm thick double-sided 0.3mm, EPS color steel composite panel
20	Ground	The main frame	Bamboo glue board 18mm thick
21		Both flanks	Bamboo glue board 18mm thick
22	Windows and doors	Plastic double-glazed sliding windows	920*920mm*6 pieces
23		High-quality steel fire doors	840*2035mm*1 piece
24	electrical systems	circuit systems	Voltage 220V,50HZ
25		Lighting	300*600 flat panel light, large ceiling light
26		Socket	Standard with international three-hole, five-hole socket (can be configured according to customer requirements socket standard)
27		Light switches	Double open, single key switch (switch standard can be configured according to customer requirements)
28		Wiring	Incoming wires 6², air conditioning outlets 4², general outlets 2.5², lighting 1.5². (Standard national standard wires, customized)
29	Accessories	Includes top corners, skirting, corner wraps, waterproof tape, sling, structural adhesive, glue gun, and more	

配置介绍

Configuration
Introduction

40-Foot Expandable Folding House configuration Sheet

Expanded Size	L11800*W6220*H2480mm	layout	one hall
Internal Size	L11540*W6060*H2200mm	Living population	4-8 people
Folded Size	L11800*W2200*H2480mm	Electric power	12KW
Covered area	73㎡	net weight	6.70 ton
frame structure			
No.	name	element	specification
1	Main frame (fully galvanized national standard)	Top side beams	80*140*3.75mm galvanized square tube
2		top beam	Galvanized bending parts 3.0mm
3		Top transverse secondary beam	30*50*1.8mm galvanized square tube
4		Bottom side beam	80*140*3.0mm galvanized square tube
5		Bottom beam	Galvanized bending parts 3.0mm
6		Bottom longitudinal secondary beam	80*80*2.0mm galvanized square tube
7		Bottom transverse secondary beam	40*80*2.0mm galvanized square tube
8		6mm galvanized lifting hole	galvanized lifting hole L210*W150*H160mm
9		steel column	Galvanized bending parts 3.0mm
10	Frame on both sides (fully galvanized to national standard)	top frame	P40*80*1.8mm Galvanized P-shaped tube
11			40*80*1.8mm galvanized square tube
12		bottom frame	60*80*2.5mm galvanized square tube

13	Frame on both sides	Folding hinge	130mm galvanized hinge
14	Overall frame protective coating	Spray paint	Electrostatic spraying/straight white plastic powder baking process + anti-corrosion coating
15	Top of box	Main exterior top plate	Type 950 - 50mm thick double-sided 0.3mm, EPS color steel composite panel + corrugated veneer t0.45mm
16		Main interior ceiling panels	Type 950-50mm thick double-sided 0.3mm, EPS color steel composite panel
17		External top plate on both sides	Type 950 - 65mm thick double-sided 0.3mm, EPS color steel composite panel + corrugated veneer t0.45mm
18	wall panels	Side walls, front and rear walls	Type 950-65mm thick double-sided 0.3mm, EPS color steel composite panel
19		Interior partition wall panels	Type 950-50mm thick double-sided 0.3mm, EPS color steel composite panel
20	ground	Main frame	Bamboo plywood 18mm thick
21		both sides	Bamboo plywood 18mm thick
22	door and windows	Plastic steel double glass sliding window	920*920mm*8 sets
23		High quality steel fire door	840*2035mm*1 set
24	Electrical System	electrical system	Voltage 220V,50HZ
25		illumination	300*600 flat panel lamp, large ceiling lamp
26		socket	Standard international three-hole and five-hole sockets (socket standards can be configured according to customer)
27		light switch	Double-open, single-button switch (switch standard can be configured according to customer requirements)
28		Wiring	Incoming wire 6', air conditioning socket 4', ordinary socket 2.5', lighting 1.5'. (Standard national standard wires, circuits)
29	Accessories	Including corner lines, skirting lines, corner wrapping, waterproof tape, slings, structural glue (Baiyun), glue gun, etc.	

配置介绍

Configuration
Introduction

平 顶 双 翼 拓 展 房

20' Flat Roof Expandable Folding House Configuration Sheet

Expanded Size	1.5900*W6420*H2450m m	layout	one hall
Internal Size	1.5740*W6260*H2250m m	Living population	2-4 people
Folded Size	1.5900*W2250*H2450m m	Electric power	12KW
Covered area	38m²	net weight	3.6 ton
frame structure			
No.	name	element	specification
1	Main frame (fully galvanised national standard)	Top side beams	80°100°3.0mm galvanized square pipe with 3.0 bending parts
2		top beam	80°100°3.0mm galvanized square pipe with 3.0 bending parts
3		Top longitudinal secondary beam	30°30°1.3 galvanized square tube
4		Top transverse secondary beam	30°50°1.5 galvanized square tube
5		Bottom side beam	80°100°3.0mm galvanized square pipe with 3.0 bending parts
6		Bottom beam	80°100°3.0mm galvanized square pipe with 3.0 bending parts
7		Bottom secondary beam	40°80°2.0 galvanized square tube
8		Customized lifting holes	12.8 Steel Portable Breakaway Hooks
9		steel column	80°100°3.0mm galvanized square pipe with 3.0 bending parts
10		Frame on both sides (fully galvanized to national standard)	top frame
11	L30°30°1.5mm angle iron		
12	Bottom main frame		80°100°3.0mm galvanized square pipe with 3.0 bending parts
13	Frame on both sides (fully galvanized to national standard)	Bottom secondary beam	40°80°2.0 galvanized square tube
14		Folding hinge	130mm galvanized hinge
15	Overall frame protective coating	Spray paint	Electrostatic spraying/straight white plastic powder baking process + anti-corrosion coating
16	Top of box	Main exterior top plate	Type 950 - 50mm thick double-sided 0.3mm, EPS color steel composite panel + corrugated veneer t0.45mm
17		Main interior ceiling panels	Type 193 bar ceiling
18		External top plate on both sides	Type 950 - 100mm thick double-sided 0.3mm, EPS color steel composite panel + corrugated veneer t0.45mm
19	wall panels	Side walls, front and rear walls	Type 950-65mm thick double-sided 0.3mm, EPS color steel composite panel
20		Interior partition wall panels	Type 950-50mm thick double-sided 0.3mm, EPS color steel composite panel
21	ground	Main frame	Bamboo plywood 18mm thick
22		both sides	Bamboo plywood 18mm thick
23	door and windows	Plastic steel double glass sliding window	920°920mm°4 sets
24		High quality steel fire door	840°2035mm°1 set
25	Electrical System	electrical system	Voltage 220V,50HZ
26		illumination	300°300 flat panel lamp, large ceiling lamp
27		socket	Standard international three-hole and five-hole sockets (socket standards can be configured according to customer
28		light switch	Double-open, single-button switch (switch standard can be configured according to customer requirements)
29	Accessories	Wiring	Incoming wire 6², air conditioning socket 4², ordinary socket 2.5², lighting 1.5². (Standard national standard wires,
30		Including corner lines, skirting lines, corner wrapping, waterproof tape, slings, structural glue (Baiyun), glue gun, etc.	

配置介绍

Configuration
Introduction

平 顶 双 翼 拓 展 房

30' Flat Roof Expandable Folding House Configuration Sheet

Expanded Size	L9000*W6420*H2450m	layout	one hall
Internal Size	L8550*W6260*H2210m	Living population	3-6 people
Folded Size	L9000*W2250*H2450m	Electric power	12KW
Covered area	58m²	net weight	5.95 ton
frame structure			
No.	name	element	specification
1	Main frame (fully galvanised national standard)	Top side beams	80*100*3.0mm galvanized square pipe with 3.0 bending parts
2		top beam	80*100*3.0mm galvanized square pipe with 3.0 bending parts
3		Top longitudinal secondary beam	30*30*1.3 galvanized square tube
4		Top transverse secondary beam	30*50*1.5 galvanized square tube
5		Bottom side beam	80*100*3.0mm galvanized square pipe with 3.0 bending parts
6		Bottom beam	80*100*3.0mm galvanized square pipe with 3.0 bending parts
7		Bottom secondary beam	40*80*2.0 galvanized square tube
8		Customized lifting holes	12.8 Steel Portable Breakaway Hooks
9		steel column	80*100*3.0mm galvanized square pipe with 3.0 bending parts
10	Frame on both sides (fully galvanized to national standard)	top frame	50*100*3.0mm galvanized square tube with 3.0 bending parts
11			1.30*30*1.5mm angle iron
12		Bottom main frame	80*100*3.0mm galvanized square pipe with 3.0 bending parts

13	Frame on both sides	Bottom secondary beam	40*80*2.0 galvanized square tube
14	(fully galvanized to national standard)	Folding hinge	130mm galvanized hinge
15	Overall frame protective coating	Spray paint	Electrostatic spraying/straight white plastic powder baking process + anti-corrosion coating
16	Top of box	Main exterior top plate	Type 950 - 50mm thick double-sided 0.3mm, EPS color steel composite panel + corrugated veneer 10.45mm
17		Main interior ceiling panels	Type 193 bar ceiling
18		External top plate on both	Type 950 - 100mm thick double-sided 0.3mm, EPS color steel composite panel + corrugated veneer 10.45mm
19	wall panels	Side walls, front and rear walls	Type 950-65mm thick double-sided 0.3mm, EPS color steel composite panel
20		Interior partition wall	Type 950-50mm thick double-sided 0.3mm, EPS color steel composite panel
21	ground	Main frame	Bamboo plywood 18mm thick
22		both sides	Bamboo plywood 18mm thick
23	door and windows	Plastic steel double glass	920*920mm*6 sets
24		High quality steel fire door	840*2035mm*1 set
25	Electrical System	electrical system	Voltage 220V,50HZ.
26		illumination	300*600 flat panel lamp, large ceiling lamp
27		socket	Standard international three-hole and five-hole sockets (socket standards can be configured according to customer)
28		light switch	Double-open, single-button switch (switch standard can be configured according to customer requirements)
29		Wiring	Incoming wire 6², air conditioning socket 4², ordinary socket 2.5², lighting 1.5². (Standard national standard wires, circuits)
30	Accessories	Including corner lines, skirting lines, corner wrapping, waterproof tape, slings, structural glue (Baiyun), glue gun, etc.	

配置介绍

Configuration
Introduction

平 顶 双 翼 拓 展 房

40' Flat Roof Expandable Folding House Configuration Sheet

Expanded Size	L11800*W6420*H2450mm	layout	one hall
Internal Size	L11650*W6260*H2210mm	Living population	4~8 people
Folded Size	L11800*W2250*H2450mm	Electric power	12KW
Covered area	76m²	net weight	6.5 ton
frame structure			
No.	name	element	specification
1	Main frame (fully galvanised national standard)	Top side beams	80°100°3.0mm galvanized square pipe with 3.0 bending parts
2		top beam	80°100°3.0mm galvanized square pipe with 3.0 bending parts
3		Top longitudinal secondary beam	30°30°1.3 galvanized square tube
4		Top transverse secondary beam	30°50°1.5 galvanized square tube
5		Bottom side beam	80°100°3.0mm galvanized square pipe with 3.0 bending parts
6		Bottom beam	80°100°3.0mm galvanized square pipe with 3.0 bending parts
7		Bottom secondary beam	40°80°2.0 galvanized square tube
8		Customized lifting holes	12.8 Steel Portable Breakaway Hooks
9		steel column	80°100°3.0mm galvanized square pipe with 3.0 bending parts
10	Frame on both sides (fully galvanized to national standard)	top frame	50°100°3.0mm galvanized square tube with 3.0 bending parts
11			L30°30°1.5mm angle iron
12		Bottom main frame	80°100°3.0mm galvanized square pipe with 3.0 bending parts

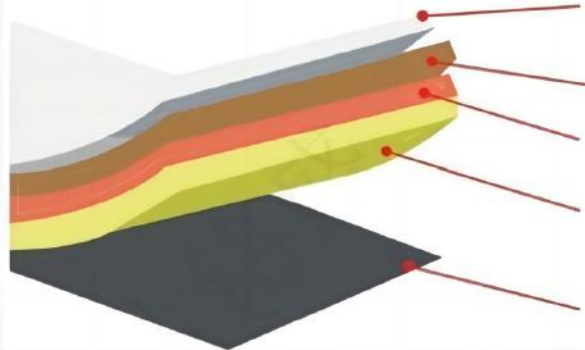
13	Frame on both sides	Bottom secondary beam	40*80*2.0 galvanized square tube
14	(fully galvanized to national standard)	Folding hinge	130mm galvanized hinge
15	Overall frame protective coating	Spray paint	Electrostatic spraying/straight white plastic powder baking process + anti-corrosion coating
16	Top of box	Main exterior top plate	Type 950 - 50mm thick double-sided 0.3mm, EPS color steel composite panel + corrugated veneer
17		Main interior ceiling panels	Type 193 bar ceiling
18		External top plate on both sides	Type 950 - 100mm thick double-sided 0.3mm, EPS color steel composite panel + corrugated veneer
19	wall panels	Side walls, front and rear walls	Type 950-65mm thick double-sided 0.3mm, EPS color steel composite panel
20		Interior partition wall panels	Type 950-50mm thick double-sided 0.3mm, EPS color steel composite panel
21	ground	Main frame	Bamboo plywood 18mm thick
22		both sides	Bamboo plywood 18mm thick
23	door and windows	Plastic steel double glass	920*920mm*8 sets
24		High quality steel fire door	840*2035mm*1 set
25	Electrical System	electrical system	Voltage 220V, 50HZ
26		illumination	300*600 flat panel lamp, large ceiling lamp
27		socket	Standard international three-hole and five-hole sockets (socket standards can be configured)
28		light switch	Double-open, single-button switch (switch standard can be configured according to customer)
29		Wiring	Incoming wire 6², air conditioning socket 4², ordinary socket 2.5², lighting 1.5². (Standard
30	Accessories	Including corner lines, skirting lines, corner wrapping, waterproof tape, slings, structural glue (Baiyun), glue gun, etc.	

Introduction to Metal Carving Panel

expandable folding house raw materials

Development history

The surface of the metal carved board is a high-quality color embossed decorative metal board treated with a special layer. The middle layer is a hard high-density polyurethane foam insulation layer treated with flame retardant, and the bottom is an aluminum foil protective layer that plays a role in thermal insulation, moisture resistance. Due to its inherent characteristics of thermal insulation, waterproofing, flame retardant, lightweight seismic resistance, convenient construction, sound insulation and noise reduction, green environmental protection, aesthetic durability, etc., as well as its simple and practical assembly method, the wall panel does not due to seasonal environmental limitations, installation and use are very safe and convenient, suitable for all seasons. This new type of exterior wall insulation decorative panel highlights its absolute advantages.



The surface of the steel plate is coated with high weather resistant polyester paint

Decorative door film or coating

Aluminum-zinc alloy coated steel sheet

High hardness high-density polyurethane insulation layer treated with flame retardant

The back adopts good waterproof performance and reflects the heat of the house
Glass fiber cloth for enhancing the insulation effect of the source reinforced board

There are over a hundred combinations of various relief patterns and colors. The luxurious and beautiful decorative effect highlights the level and taste of the building. Simple and flexible. The disassembly and assembly method makes it easy to replace the wall design matching.

Due to the structural characteristics of metal carved panels, a comparison is made in terms of construction speed, service life, disaster resistance coefficient, aesthetics, insulation coefficient, and other aspects. All of them have better performance than traditional materials.



Performance Comparison	Metal carved panel	Ordinary exterior wall tiles	Ordinary paint
Construction speed	★★★★★	★	★★★
useful life	★★★★★	★★★	★★
Disaster resistance coefficient	★★★★★	★	★★★★
Aesthetics	★★★★★	★★★	★
Insulation coefficient	★★★★★	★	★
Environmental Protection Index	★★★★★	★★★	★



colorful



Thermal insulation noise reduction



durable



Lightweight seismic resistance



Easy to clean



Simple installation



Diverse types



Energy saving and noise reduction

Introduction to Metal Carving Board

expandable folding house raw material

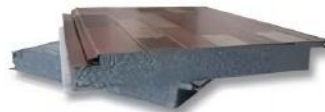
Types of sandwich structures



<<<Polystyrene sandwich



Real gold sandwich panel



<<<Graphite sandwich panel



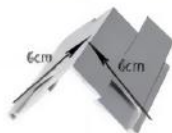
Starting parts
Used for: Wall panel starting



Closing piece
Used for: eaves and walls nearby



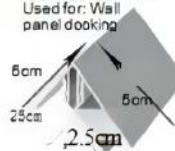
Mid seam joint strip
Used for: Wall panel docking



Solar angle
Used for: at the corner of the external corner of the wall



Door and window package
Used for: door and window edging



Yin Yang Corner
Used for: at the corners of the internal and external corners of the wall

Customizable accessories



AS01

Material: Aluminum alloy
Color: Natural color of aluminum alloy
Function: Starting piece (concealed)



AS04

Material: Aluminum alloy
Color: Natural color of aluminum alloy
Function: Connector (female corner, male corner)



AS02

Material: Aluminum alloy
Color: Natural color of aluminum alloy
Function: Starting piece (exposed type)



AS02

Material: Aluminum alloy
Color: Natural color of aluminum alloy
Function: Closing piece



AS03

Material: Aluminum alloy
Color: Natural color of aluminum alloy
Function: Connector



AS03

Material: Aluminum alloy
Color: Natural color of aluminum alloy
Function: Closing piece (large male corner)

Note: Accessories with the same color and pattern as the wall panel can be customized!

Install accessories

...

Introduction to Metal Carving Board

Product Features

Insulation, heat insulation, consumption reduction, and energy conservation

Metal carved panels have excellent thermal insulation properties, and compared with traditional exterior wall insulation and decorative building materials, they have excellent cold resistance and thermal insulation performance.

Greatly reduces heating and cooling energy consumption, thereby saving energy expenses, and the product has high cost-effectiveness.

Easy installation and cost savings

The installation method of metal carved panels is simple and fast, not limited by seasonal climate and geographical environment, and suitable for all year round. Significantly shortened engineering week. This not only accelerates the project progress, but also saves construction costs and reduces overall costs.

Flame retardant, waterproof and moisture-proof board

The metal carved board has undergone special treatment and has good flame retardant properties, ensuring safety and peace of mind. Traditional exterior wall decoration materials commonly suffer from substrate degradation caused by water and cold permeability, leading to problems such as water seepage on indoor walls, and the excellent self structure of the external wall insulation decoration integrated panel and the compact concave convex plug-in buckle groove installation method between the panels avoid rain, snow, the structural damage caused by the cycles of freezing, thawing, drying, and wetting has been eliminated after installation, effectively avoiding the worry of wall seepage and preventing indoor wall mold the phenomenon. Even in extremely cold regions, the stable performance of the exterior wall insulation and decoration integrated panel has no worries about water seepage and deformation, which extends the building's lifespan service life.

Sound reduction, noise reduction, quiet and comfortable

The core material in the middle of the metal carved board is a high-density polyurethane foam insulation layer, and its interior is an independent closed bubble structure, has good sound insulation effect.

expandable foldinghouse raw material

Lightweight, land saving, earthquake resistant, crack resistant

Metal carved board has a light texture, high strength, and good impact resistance. It is lightweight and not only reduces the burden on the building itself, but also greatly reduces the impact of earthquakes on buildings. This board is installed on light steel structure buildings, with strong integrity, earthquake resistance and crack prevention, and sturdy safety.

Green, environmentally friendly, and durable

Metal carved boards have stable chemical and physical structures, do not decompose or mold, are non radiative, pollution-free, and environmentally friendly. This board can also be flexibly disassembled and reused for installation in other buildings, and the leftover scraps from construction can also be recycled and reused, greatly reducing construction waste during the construction process. It is a high-quality, high-performance environmentally friendly product. The integrated panel for exterior wall insulation and decoration is easy to clean, durable, and has a long service life.

More decorative options available

The combination of over a hundred relief patterns and colors provides architectural design with greater room for expression. The luxurious and beautiful decorative effect highlights the level and taste of the building. The simple and flexible disassembly and assembly method makes it easy to replace the wall design matching. Multiple colors and embossed patterns of exterior wall insulation and decoration integrated panels can be used in combination to create a unique and versatile style combination.

A wide range of applications

Metal carved panels can be widely used in various engineering fields such as municipal construction, apartment housing, office management, villas, garden attractions, old building renovation, security guard booths, etc. This building material is suitable for both newly constructed brick concrete structures, frame structures, steel structures, lightweight houses, and other types of buildings, as well as for energy-saving decoration and renovation of existing buildings, as well as indoor and outdoor decoration.

Metal carved board color card display

expandable folding house raw materials

Metal carved board

金属雕花板

「七砖系列」



D-001 古墙灰



D-002 浅棕砂



D-003 沙漠黄



D-004 松木节



D-005 天使白



D-006 砖红砂



D-007 微紫黄砂



D-008 米黄砂

「六砖系列」



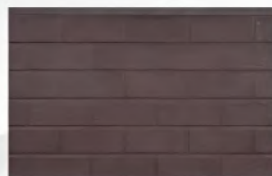
D-009 天使白



D-010 米黄砂



D-011 砖红砂



D-012 浅棕砂

Metal carved board color card display

expandable folding house raw materials

三砖系列



D-013 古墙灰



D-014 浅棕砂



D-015 沙漠黄



D-016 天使白



D-017 微紫黄砂



D-018 象牙白



D-019 黄金麻



D-020 米黄砂



D-021 砖红砂

弹涂纹平板系列



D-022 多色砖



D-023 仿古青砖



D-024 红砖灰缝



D-025 灰砖白缝



D-026 天使白



D-027 象牙白



D-028 米黄砂



D-029 浅灰



D-030 浅棕砂

Metal carved board color card display

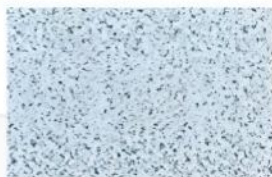
expandable folding house raw materials



D-031 黄金麻



D-032 水磨石



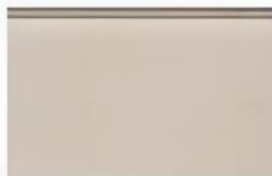
D-033 芝麻大理石



D-034 文化石



D-035 古墙灰



D-036 微紫黄砂



D-037 砖红砂



D-038 古墙灰



D-039 松木节



D-040 天使白



D-041 微紫黄砂



D-042 米黄砂



D-043 沙漠黄



D-044 浅棕砂

弹涂纹中斜沟系列

Metal carved board color card display

expandable folding house raw materials

「弹涂纹中直沟系列」



D-045 沙漠黄



D-046 天使白

「木纹平板系列」



D-047 天使白



D-48 象牙白



D-049 沙漠黄



D-050 松木节



D-051 黑鸡翅木

「木纹中斜沟系列」



D-052 古墙灰



D-053 警蓝



D-054 松木节



D-055 天使白



D-056 象牙白



D-057 黑鸡翅木



D-058 黄鸡翅



D-059 鸡翅木



D-060 砖红砂

Metal carved board color card display

expandable folding house raw materials



D-061 沙漠黄

「木纹中直沟系列」



D-062 7006灰



D-063 微紫黄砂



D-064 古墙灰



D-065 黑鸡翅



D-066 黄鸡翅



D-067 松木节

「平板系列」



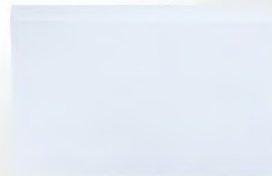
D-068 橙黄



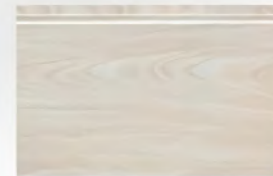
D-069 和田宝玉



D-070 爵士白



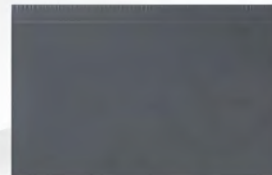
D-071 高光白



D-072 越南木



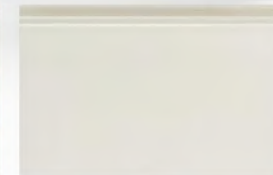
D-073 沙漠黄



D-074 古墙灰



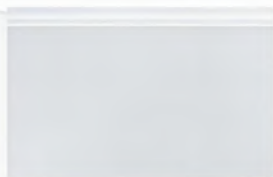
D-075 松木节



D-076 象牙白

Metal carved board color card display

expandable folding house raw materials



D-077 天使白



D-078 安溪红大理石

平板中斜沟系列



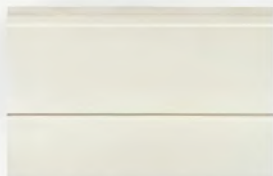
D-079 鸡翅木



D-080 松木节



D-081 大眼木

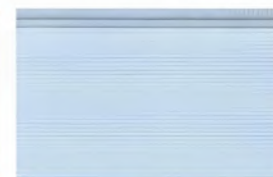


D-082 米黄砂

水波纹系列



D-083 橙黄小波纹



D-084 高光白小波纹



D-085 闪银大波纹

长城板系列



CC-天使白



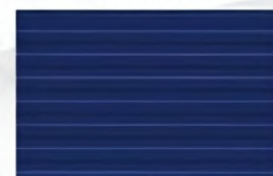
CC-象牙白



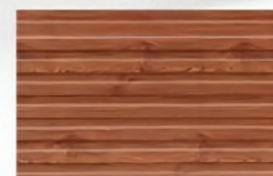
CC-亮银灰



CC-浅棕砂



CC-警蓝



CC-鸡翅木

Metal carved board color card display

expandable folding houseraw materials

长石纹系列



CS-象牙白



CS-米黄砂



CS-微紫黄砂



CS-浅棕砂

双色系列



S-001 古墙灰七砖辊橘红



S-002 古墙灰三砖辊天使白



S-003 古墙灰三砖辊橘红



S-004 浅棕砂三砖辊橘红



S-005 浅棕砂七砖辊橘红



S-006 浅棕砂三砖辊天使白



S-007 浅棕砂七砖辊土黄



S-008 天使白三砖辊橘红



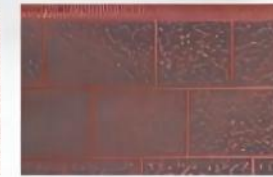
S-009 天使白七砖辊古墙灰



S-010 天使白七砖辊土黄



S-011 天使白七砖辊网纹红










S-012 砖红砂三砖辊古墙灰

Production Order Example

No.	Actual pictures	Color card number	remark
1		 GM-01	Metal carved board
2		 GM-21-黑胡桃木	Metal carved board
3		 GM-02-象牙白平面	Metal carved board /monocline groove
4		 GM-S3-古铜灰中直沟	Metal carved board /wood grain monoclinic groove

















No.	Actual pictures	Color card number	remark
5		 GM-01	Metal carved board
6		Colored crystal	Metal carved board/diagonal groove
7		 GM-10-普蓝砖纹	Metal carved board
8		 GM-09-古铜灰	Metal carved board

Production Order Example

No.	Actual pictures	Color card number	remark
9		 GM-65-省墙灰中沟平面	Metal carved board/monoclinic groove green
10		 GM-65-省墙灰中沟平面	Metal carved board
11		 D-026 内框水曲纹	Metal carved board
12		 松木大节ZH	Graphene bamboo wood fiber integrated board

No.	Actual pictures	Color card number	remark
13		 D-026 内框水曲纹	Graphene bamboo wood fiber integrated board
14		Wood color	Color steel plate
15		Flat warm white	Color steel plate
16		 GM-57-沙漠黄单斜沟	Metal carved board

Production Order Example

No.	Actual pictures	Color card number	Remark	No.	Actual pictures	Color card number	Remark
17		 GM-57-沙漠黄单侧沟 GM-20-标准型	Metal carved board	21		 GM-08-红色砂岩 GM-08-红色砂岩	Metal carved board
18		GM-50  GM-50-普玛图型	Metal carved board	22		GM-17  GM-17-黄褐色	Metal carved board
19		S-002  GM-08-红色砂岩	Metal carved board	23		GM-56  GM-56-天蓝白单侧沟	Metal carved board
20		GM-19  GM-19-原色柚木	Metal carved board	24		GM-28  GM-28-古铜型三隔	Metal carved board

Production Order Example

No.	Actual pictures	Color card number	Remark	No.	Actual pictures	Color card number	Remark
25			Graphene bamboo wood fiber integrated board	28			Color steel plate
26		Orange Peel Dark Gray  深灰	Graphene bamboo wood fiber integrated board	29		Iron gray	Color steel plate
27		Orange peel beige  米黄	Graphene bamboo wood fiber integrated board	30		firefighting red	Color steel plate

Supporting facilities

Raw Materials

Galvanized square tube ◆◆◆

Galvanized square tube is a kind of hot-rolled or cold-rolled galvanized steel strip or galvanized coil for the billet by cold bending processing and forming, and then by high-frequency welding made of square cross-section shape dimensions of the hollow square cross-section steel tube; or will be done beforehand cold-formed hollow steel tube and then hot-dip galvanized processed into the galvanized square tube.

Durable

Reliable

Toughness of plating

Comprehensive protection

Saves time and effort



Toilet Configuration

Rare earth antimicrobial glaze, PP superior arc seat, secondary water effect, slow fall cover, without angle valve hose

Specification: 680*370*700 mm

Integrated cabinet

Cabinets, range hoods, gas stoves, disinfection cabinets, dishwashers, refrigerators, microwave ovens, electric ovens, water basins, drawers and pull-outs, garbage grinders, and other kitchen appliances and kitchen appliances are systematically paired with a new form of kitchen.



Supporting facilities

Raw Materials



EPS wall panel

By the disposable polystyrene (EPS) particles as raw materials, the shape of the fertilizer particles, heated pre-foaming, into a white pearl-like larger particles, and then in the mold heated compression molding and made of foam plastic panels with micro-fine closed-cell structure.



polyurethane wall panel

Energy-saving performance is high, fire insulation performance is excellent material, used to do composite panels of polyurethane weight is generally 30 kg - 40 kg.



Bamboo wood fiber integrated board

Bamboo wood fiber one-piece wall panel material is manufactured by extrusion process, so it can be customized according to the needs of the product's color, size, shape on demand, to minimize the cost of use and save forest resources.

It has outstanding environmental protection function, can be recycled, almost does not contain harmful substances and toxic volatile, pollution-free, pollution-free, and has the characteristics of sound absorption and energy saving, in line with national environmental standards and European standards, non-toxic and odorless after the renovation, you can immediately move in.

SS550 silicone sealant

Raw Materials

Product Characteristics

- Various types of doors and windows installation caulking sealing, decoration caulking sealing;
- Single grouping, easy to use, good extrudability and thixotropy at 4° C-40° C;
- Neutral curing, non-corrosive to metals, coated glass and other building materials;
- No irritating or unpleasant odor;
- Excellent weather aging resistance, aging resistance, UV, ozone and water resistance;
- Excellent bonding to most building materials;
- Good compatibility with other neutral silicone sealants.

Limitations on use

- Cannot be used as a structural sealant;
- Cannot be used for curtain wall work;
- Not suitable for adhesive sealing of cement and concrete substrates;
- Not suitable for use in airtight places, because the sealant needs to absorb moisture in the air to cure;
- When the surface temperature of the material is less than 4°C or more than 40°C, it is not suitable for construction;
- For more information on use restrictions, please consult the "White Cloud Sealant Use Restrictions".

Main technical indicators

performances	norm	Item	
sagging degree: mm	≤3	standards-compliant	(SR) GB/T 14683-I-F, Gn, Gw-20级
extrudability: ml/min	≥150		ASTM C920 ISO 11600
surface drying time: h	≤3	Storage and expiration date	Store in a cool and dry place under 27°C, storage period is 12 months.
displacement capability: %	±20	color	Black, white, grey, dark grey, dark brown, reddish brown, light yellow, earthy yellow and other colors as requested by users.
Elastic recovery rate: %	≥80		
Constant elongation bonding	non-destructive	Packaging and Specifications	Pail (300mL net content) or 19L pail or laminated flexible film (500mL net content)
Constant elongation bonding after immersion in water	non-destructive		
Bonding after cold drawing and hot pressing	non-destructive	Total number of interfaces and construction methods	Please refer to "Baiyun Brand Silicone Building Sealant Use Craft Guidelines"
Quality loss rate: %	≤8		



Supporting Facilities

Plumbing Material Details



Note: Sewage pipe adopts 110PVC drainage pipe, waste water pipe adopts 50PVC drainage pipe, and water pipe for water intake uses PPR25 hot and cold water pipe.

1. PP-R Pipe

PP-R pipe is also called three types of polypropylene pipe, non-toxic, lightweight, pressure resistance, corrosion resistance, with good impact resistance and long-term creep performance. Mainly used for water supply pipe system, can be used for pure drinking water pipeline. pp-r pipe is divided into cold water pipe, hot water pipe. pp-r pipe interface using heat fusion technology, the pipe is completely fused together, so once the installation of the pressure test passed, will not be like aluminum-plastic pipe as long as the aging leakage phenomenon, the degree of reliability is very high. pp-r pipe is not scaling, good thermal insulation performance, pipe wall smooth. It is becoming a popularized material.

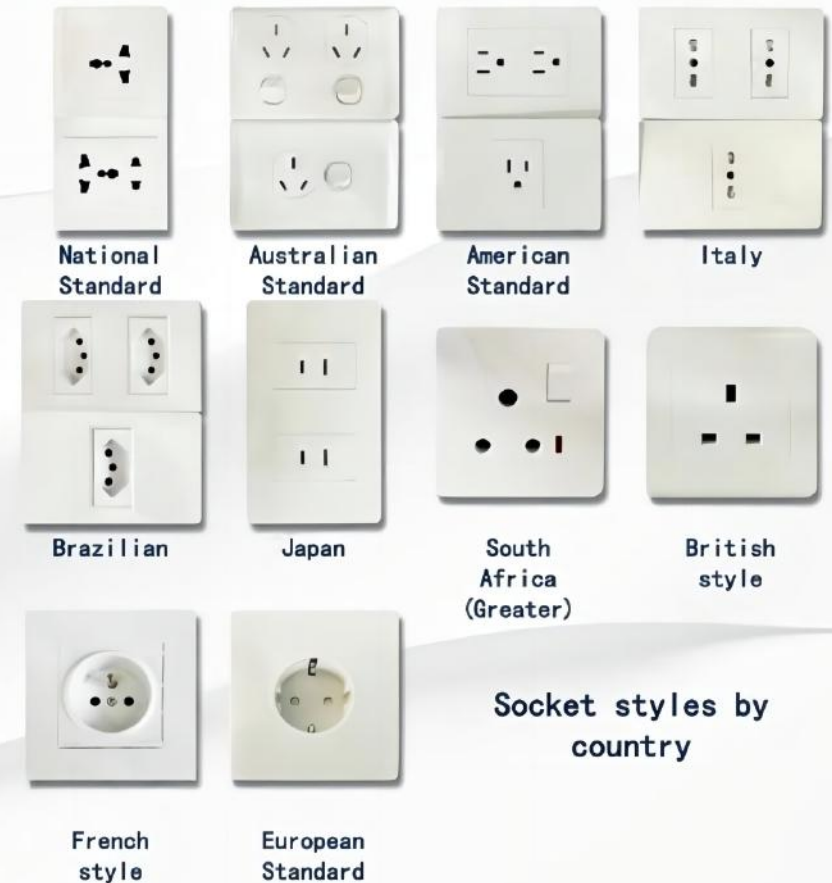
In terms of comprehensive performance, PPR pipe is the current cost-effective pipe, so it has become the preferred material for home plumbing remodeling. Main features.

- 1, non-toxic, health, environmental protection. PP-R raw material molecules only carbon and hydrogen elements, no harmful and toxic elements exist, not only for hot and cold water pipes, but also for pure drinking water system.
- 2, thermal insulation and energy saving. PP-R pipe thermal conductivity of 0.21w/mk, only 1/200 of the steel pipe.
- 3, better heat resistance, PP-R pipe Vicat softening point of 131.5 C. The maximum working temperature of up to 95 ° C, to meet the building water supply and drainage specifications in the hot water system requirements.
- 4, long service life, PP-R pipe in the working temperature of 70 °C, working pressure (P.N) 1.0MPa conditions, the service life of up to 50 years or more.

Second, PVC pipe

PVCf main ingredient is polyvinyl chloride, with good tensile and compressive strength, excellent corrosion resistance, the price is the cheapest in all types of plastic pipe.

Raw Materials



Socket styles by country

Detail Display



bull's eye lamp



High-end toilet



ordinary toilet



ordinary sprinkler



High-end sprinkler



High-end
washbasin



ordinary
washbasin



ordinary sink
hanging
cabinet



High-end sink
hanging
cabinet

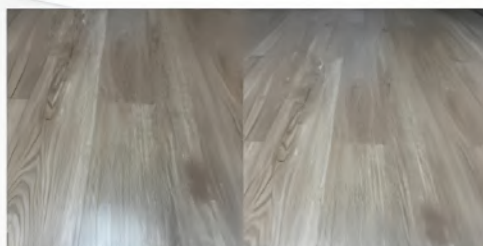


ordinary sink
base cabinet



High-end sink
base cabinet

Detail Display



SPC stone plastic
flooring



Inset hinge folding
seam display



Exterior wall
metal carved
board



Bamboo wood
fiber interior
wall panels



Simple plastic
steel window



Broken bridge aluminum
exterior hung windows



Broken bridge
aluminum casement
window/door

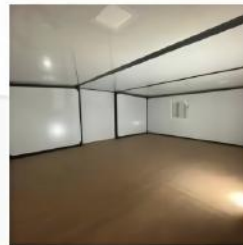


Simple plastic
steel single
door

Detail Display



Flat Roof Expandable Folding House with Interior Wall Panels +one bathroom



Simple version 20' Expandable Folding House Color Coated Board + one hall



Hardcover version 20' Expandable Folding House + one hall



Whole cabinet (L-shaped cabinet + hanging cabinet))



20 feet plus hydraulic rod + broken bridge aluminum with aluminum bar doors and windows



Herringbone roof + terrace + outriggers



Terrace Display

Product Layout



Expandable folding house
interior effect



20 feet one bedroom one
living room one bathroom



20 feet two bedrooms one
living room one bathroom



Product Layout



30 feet two bedrooms



30 feet three bedrooms



Product Layout

40 feet flat roof
three bedrooms

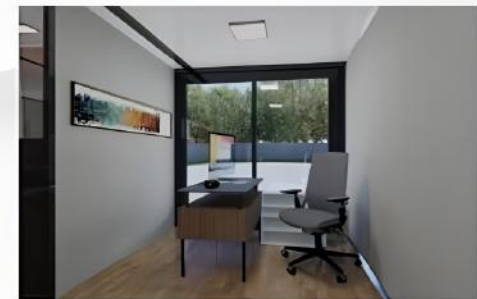


40 feet three bedrooms



Product Interior

Flat Roof Expandable Folding House



Product Interior

Expandable Folding House



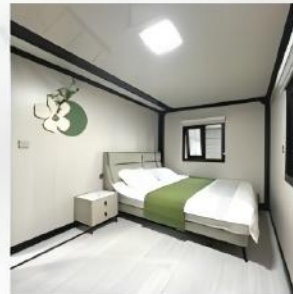
one bedroom one
living room



one bedrooms one
living room



living room
display



bedroom display

Product Interior

Expandable Folding House

Kitchen
Layout



Bathroom



Product Interior

Expandable Folding House



one bedroom
two living rooms



two bedrooms
two living rooms



three bedrooms
two living rooms



two bedrooms
two living rooms
master bedroom



two bedrooms
two living rooms
second bedroom



Product Interior

Expandable Folding House

Kitchen
Layout



Living
Room
Layout



Bathroom



Water Leakage Prevention Test



Adding corrugated boards to the roof panels creates a double-layer waterproof effect.

The corrugated board installation process ensures that the roof has a certain slope (micro-double slope), which is more conducive to drainage.

When designing the overall structure, the side roof folding seams were retracted into the main roof to avoid water leakage in the gaps. At the same time, butyl waterproof tape was pasted on the outside to provide secondary protection.

Roof wall panels are designed with sub-mother buckle, seamless connection between wall panels, avoiding the leakage problems that traditional roofing materials are prone to, and greatly improving the waterproof performance of the roof.

Application Scenarios



Application Scenarios



Köszönöm a figyelmet!



Mintaházunk megtekinthető a

4431, Nyíregyháza-Sóstógyógyfürdő,
Blaha Lujza sétány 7 sz. alatt

www.haz1napalatt.hu

